



Bureau of Ocean Energy
Management

BOEM Renewable Energy Process

Tershara Matthews

*Chief, Emerging Programs, Gulf of Mexico
Regional Office*



Gulf of Mexico Outer Continental Shelf Renewable Energy

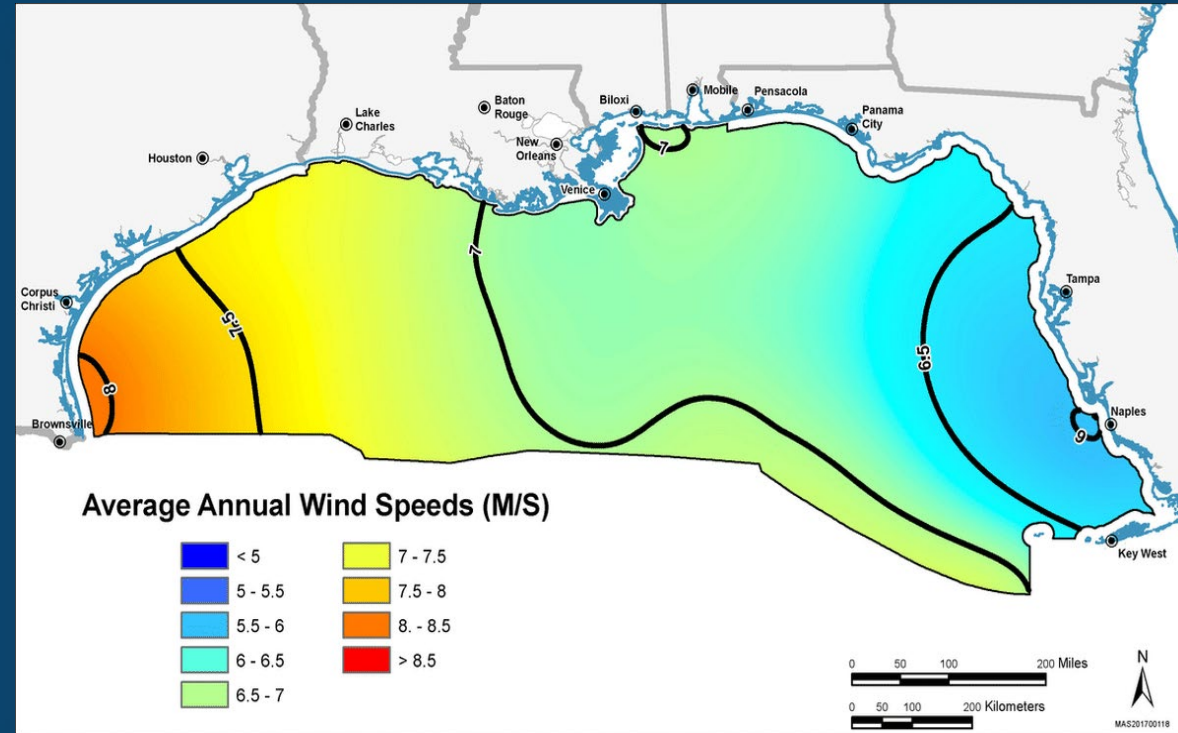
Agenda

- **Background**
- **Renewable Leasing Process**
- **Next Steps**



Gulf of Mexico Renewable Energy

- Louisiana Governor Edwards requested a Task Force on October 26, 2020.
- December 2020, Gulf of Mexico Region responded to the LA Task Force Request Letter with a region-based Task Force approach. The inaugural GOM Regional Task Force Meeting was held on June 15, 2021.
- Conducting outreach and engagement to collect data and information.
- Advantages: Proximity to oil and gas supply chain – leverage existing capabilities
- Challenges: Hurricanes – major hurricanes could increase turbine and substructure costs



BOEM Renewable Energy Process: Overview



Planning & Analysis

~ 2 YEARS

- Intergovernmental Task Force
- Request for Information or Call for Information and Nominations
- Area Identification
- Environmental Reviews



Leasing

~ 1-2 YEARS

- Publish Leasing Notices
- Conduct Auction or Negotiate Lease Terms
- Issue Lease(s)



Site Assessment

UP TO 5 YEARS

- Site Characterization
- Site Assessment Plan



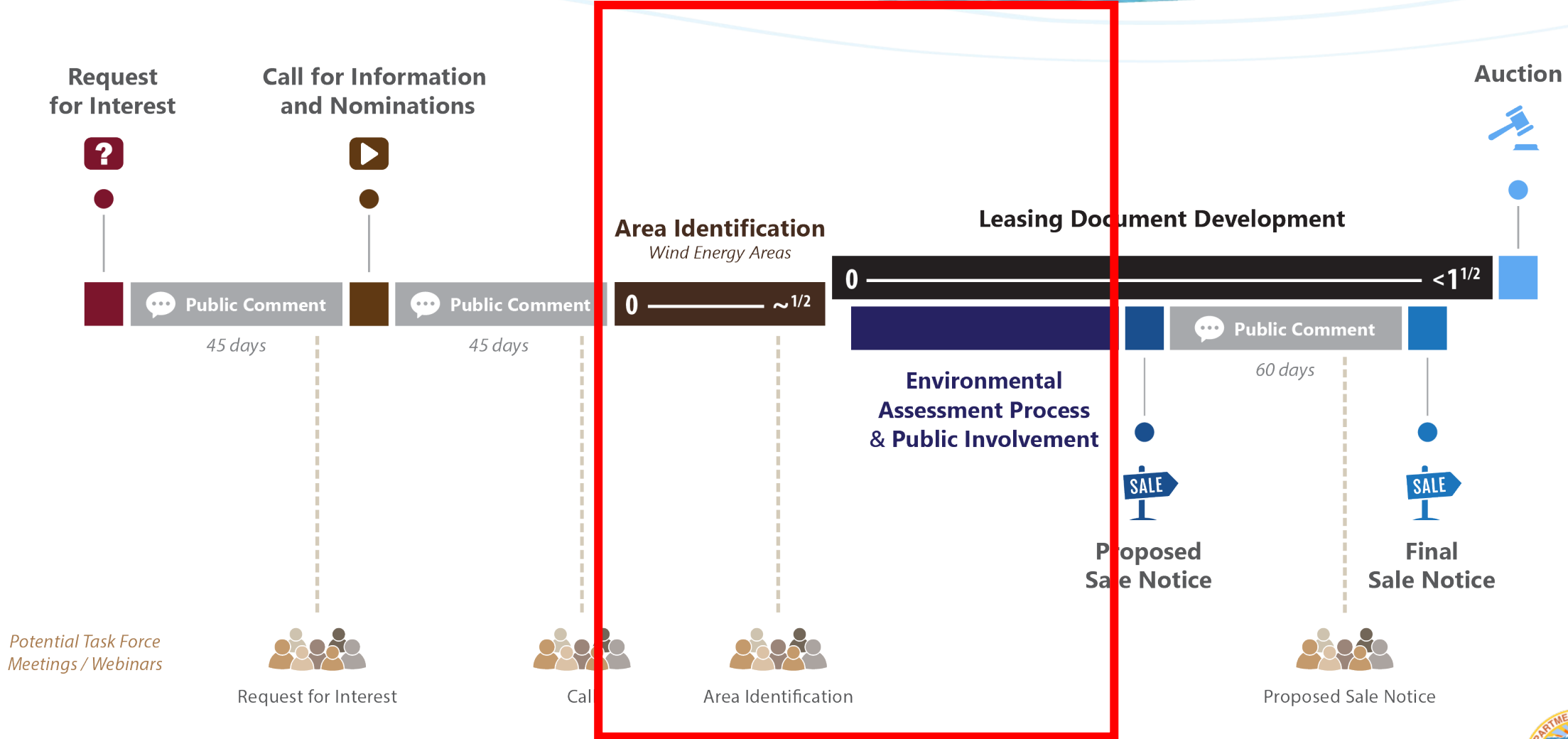
Construction & Operations

~ 2 YEARS (+25)

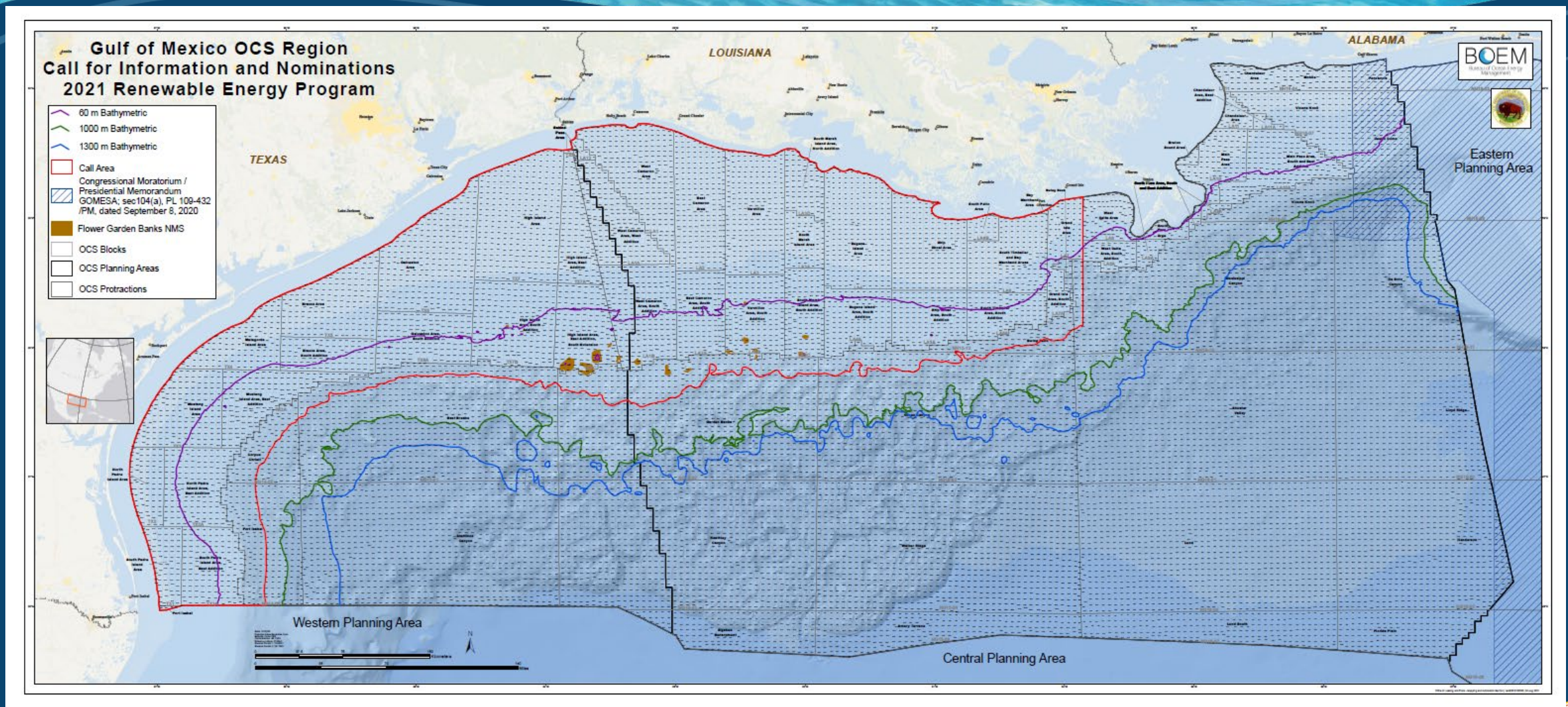
- Construction & Operations Plan
- Facility Design Report and Fabrication & Installation Report
- Decommissioning
- Environmental and Technical Reviews



Renewable Energy Process: Focus on Pre-Lease Activities



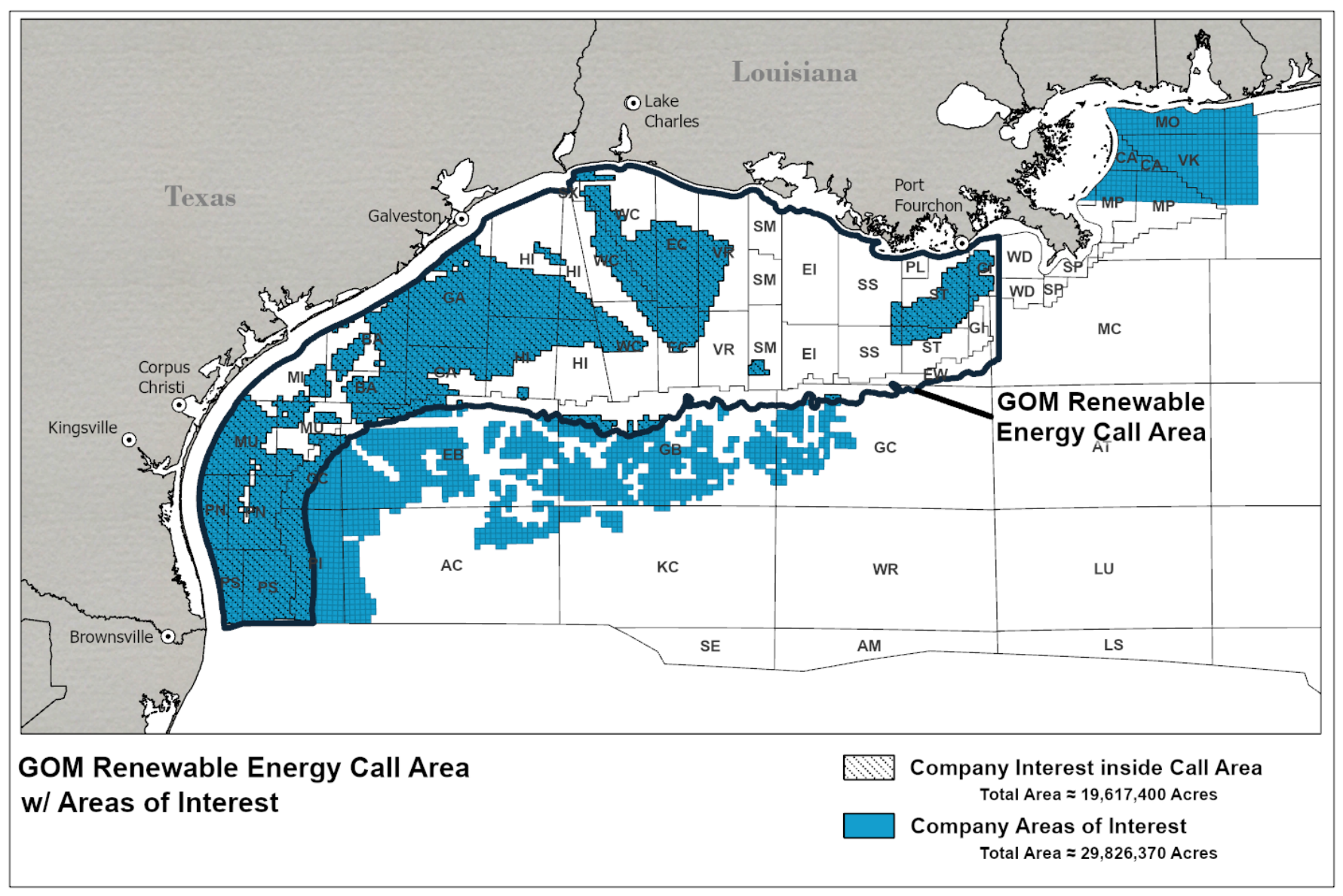
Call for Information Area



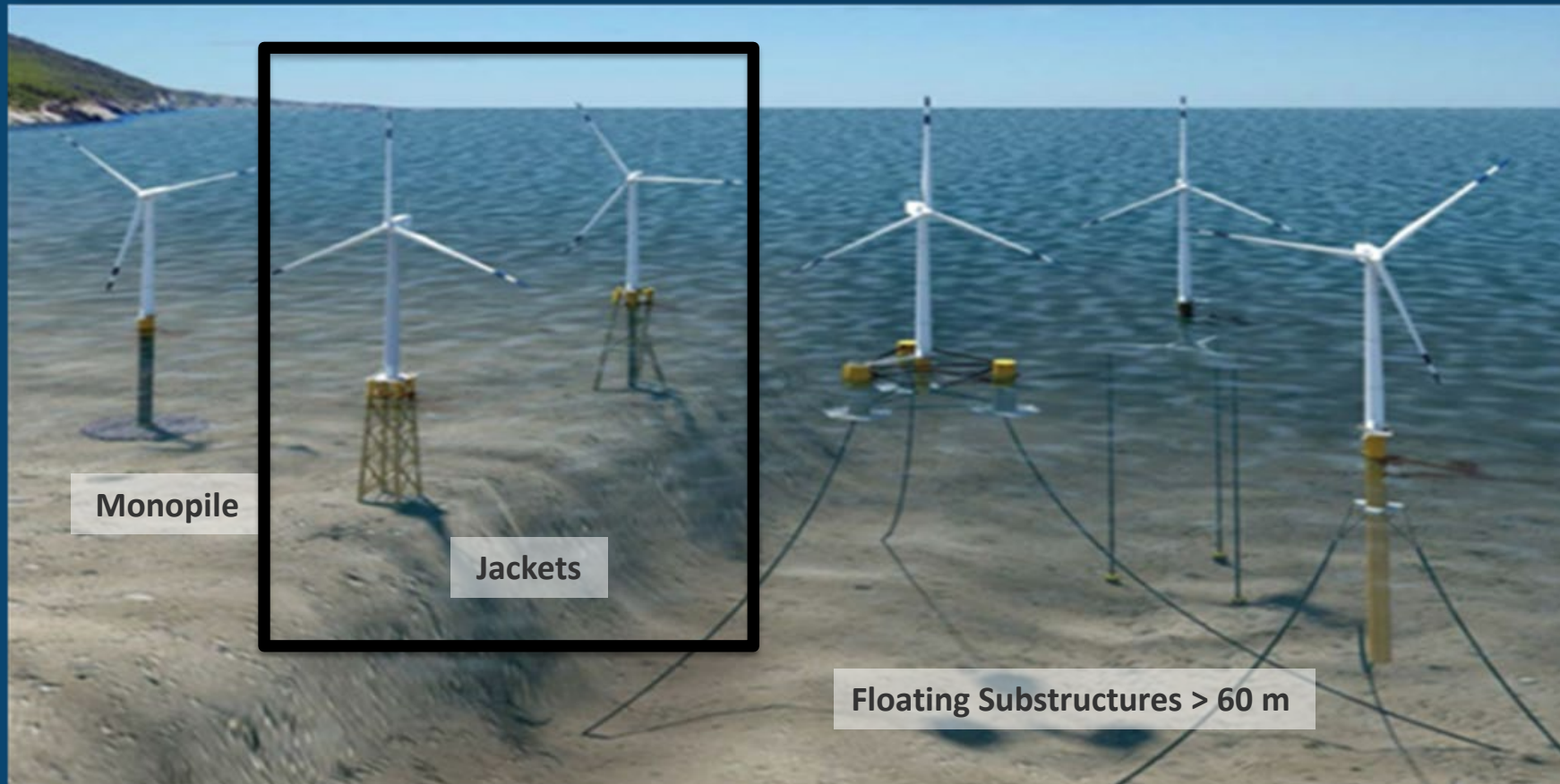
Some Major Comments Received on the Call for Information

- Request for 20 nm Coastline Buffer for Migratory Birds
- Request for 20 nm Coastline Buffer for Menhaden Fisheries for flyovers
- Protection for the Significant Sediment Resource Areas (SSRAs)
- Request for 100-400 m Buffer for Rice's Whale
- Request for exclusion of high-moderate high shrimping areas
- Request for 2 nm buffer for navigation fairways
- Removal of areas located near low-altitude training areas for DoD

Companies' Areas of Interest

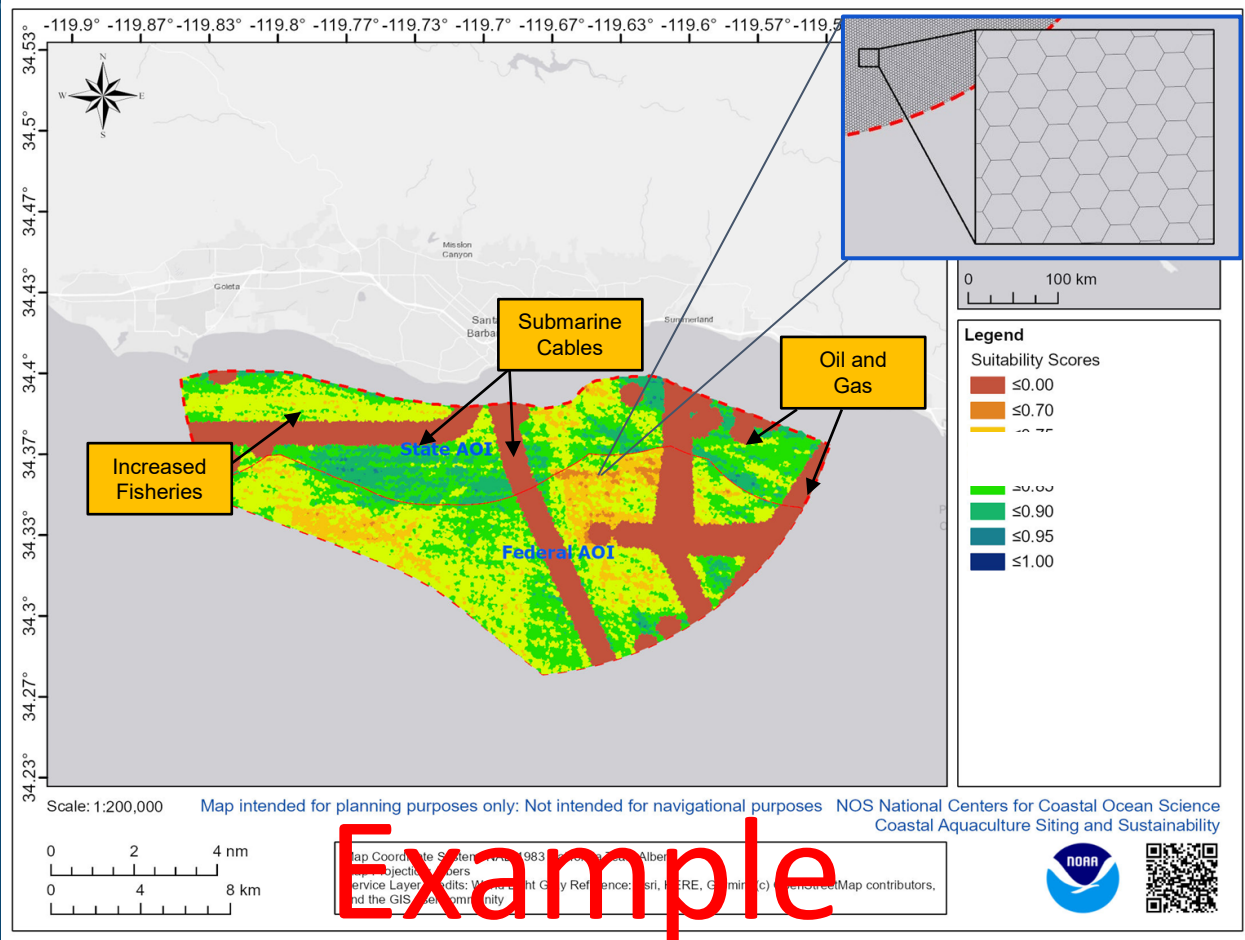
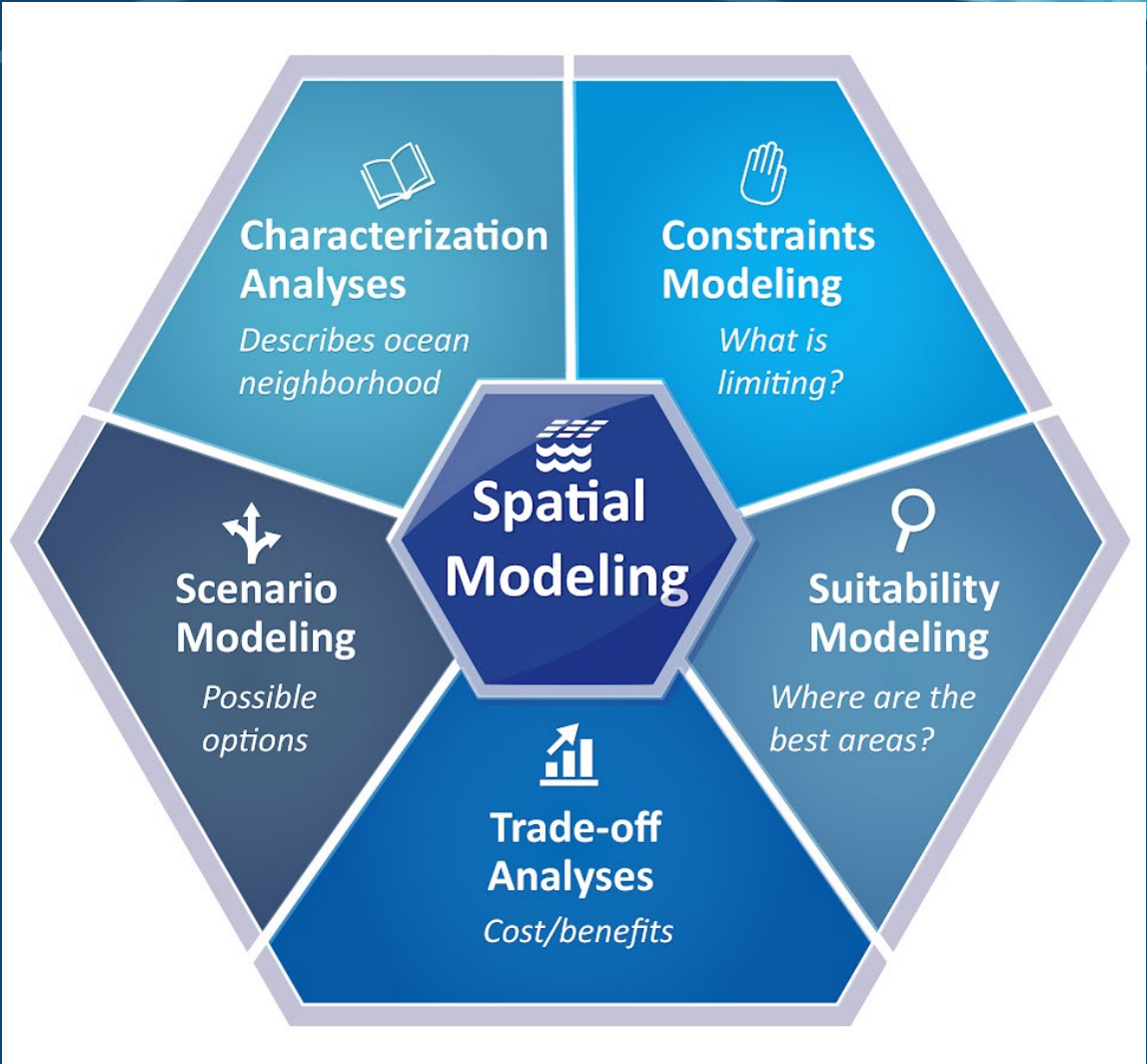


Offshore Wind Turbine Structures



Ocean Planning Model

An ocean planning model weights locations relative to each other based on a given criteria.



**PRE-DECISIONAL AND DELIBERATIVE



Ocean Planning - Deconflicting Model structure



Equally weighted submodels

****PRE-DECISIONAL AND DELIBERATIVE**

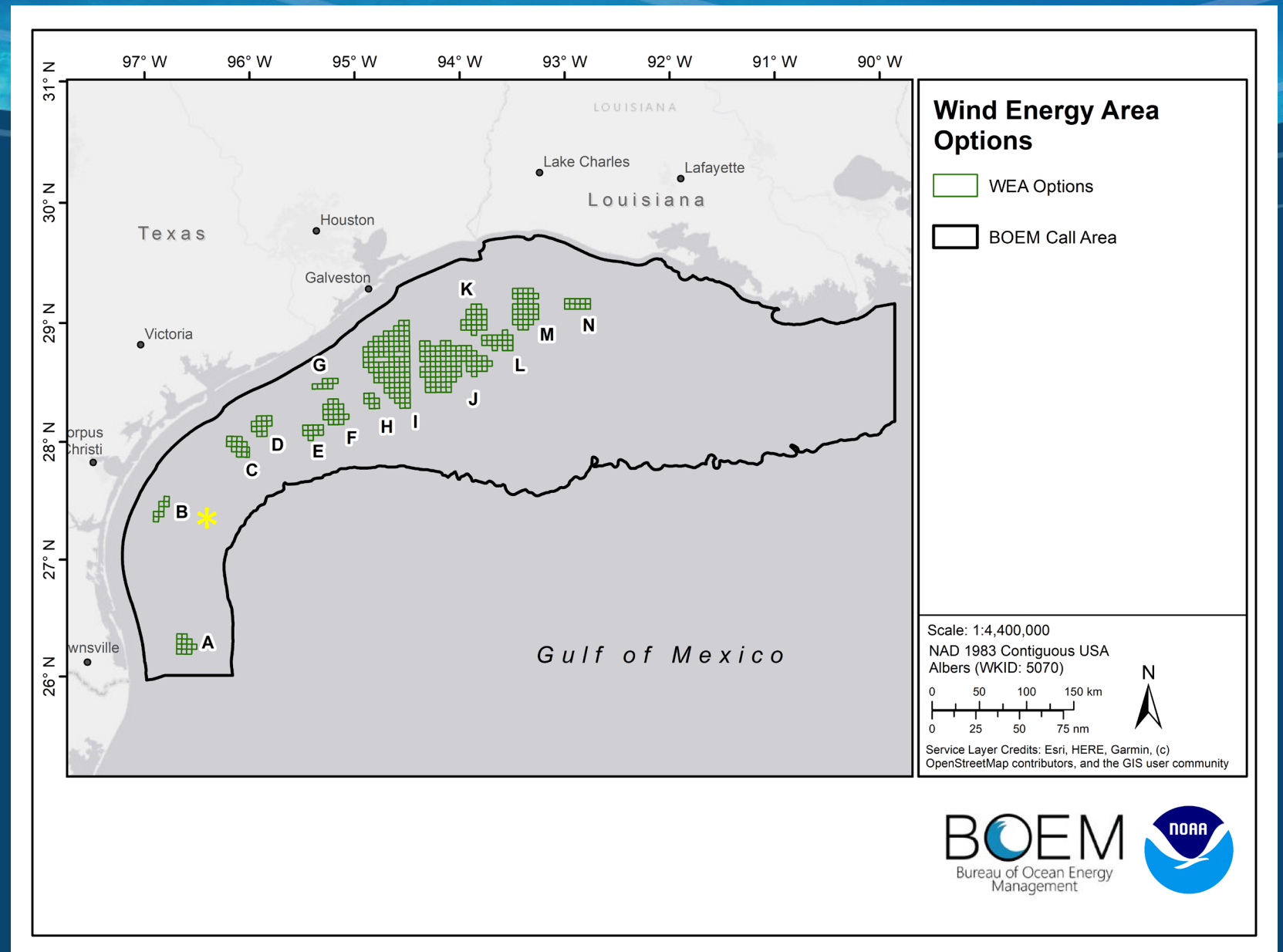
Deconflicting Process

13 deconflicted areas ranging from: 39,840 to 546,645 acres

2 million acres total

Top scoring clusters at the $p=.05$ significance level (approx. top 5%)

*Area B is no longer an option due a later DoD assessment requesting removal.



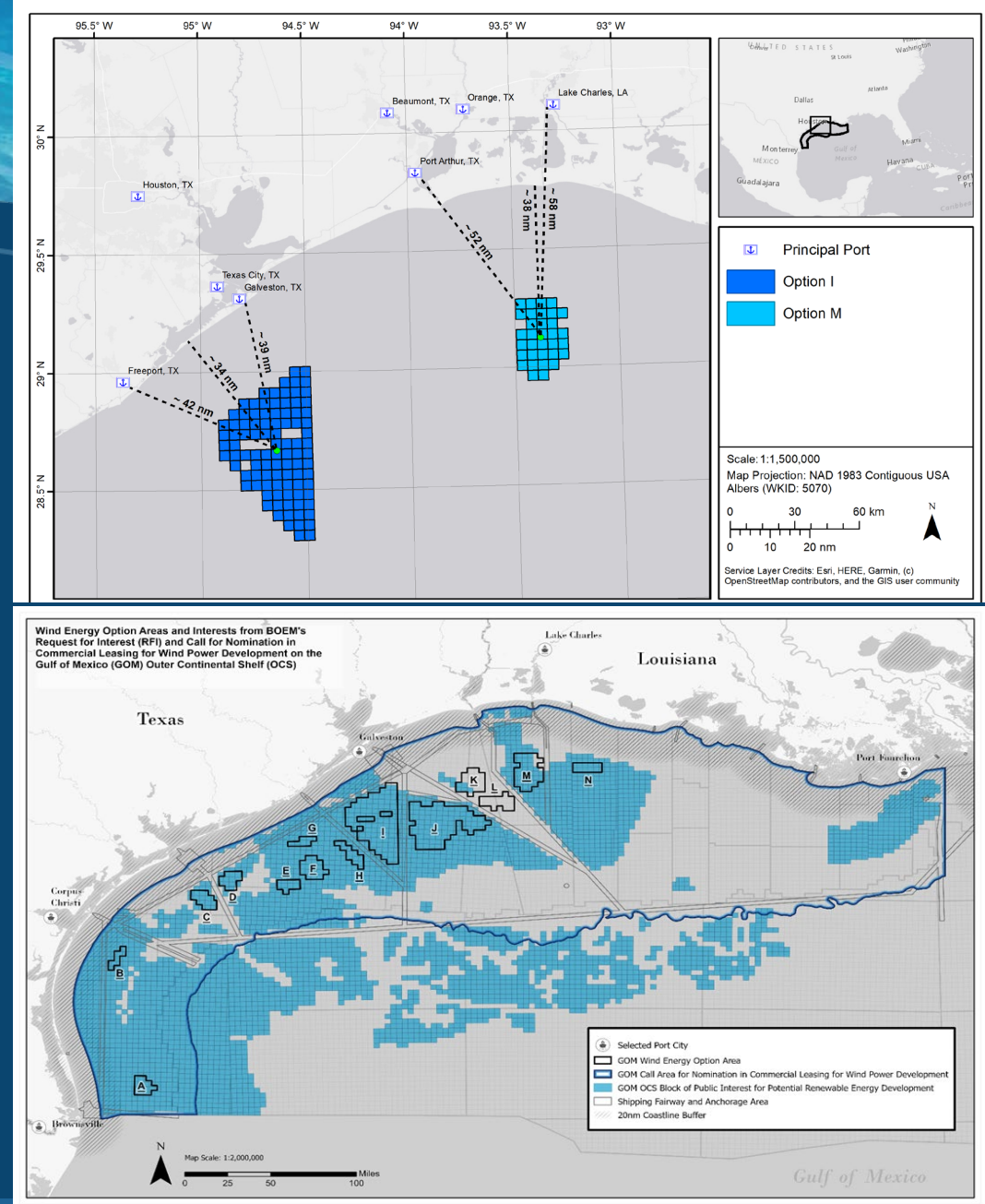
GOM Recommended WEAs

1. Galveston (Option I) 546,645 acres
2. Lake Charles (Option M) 188,023 acres

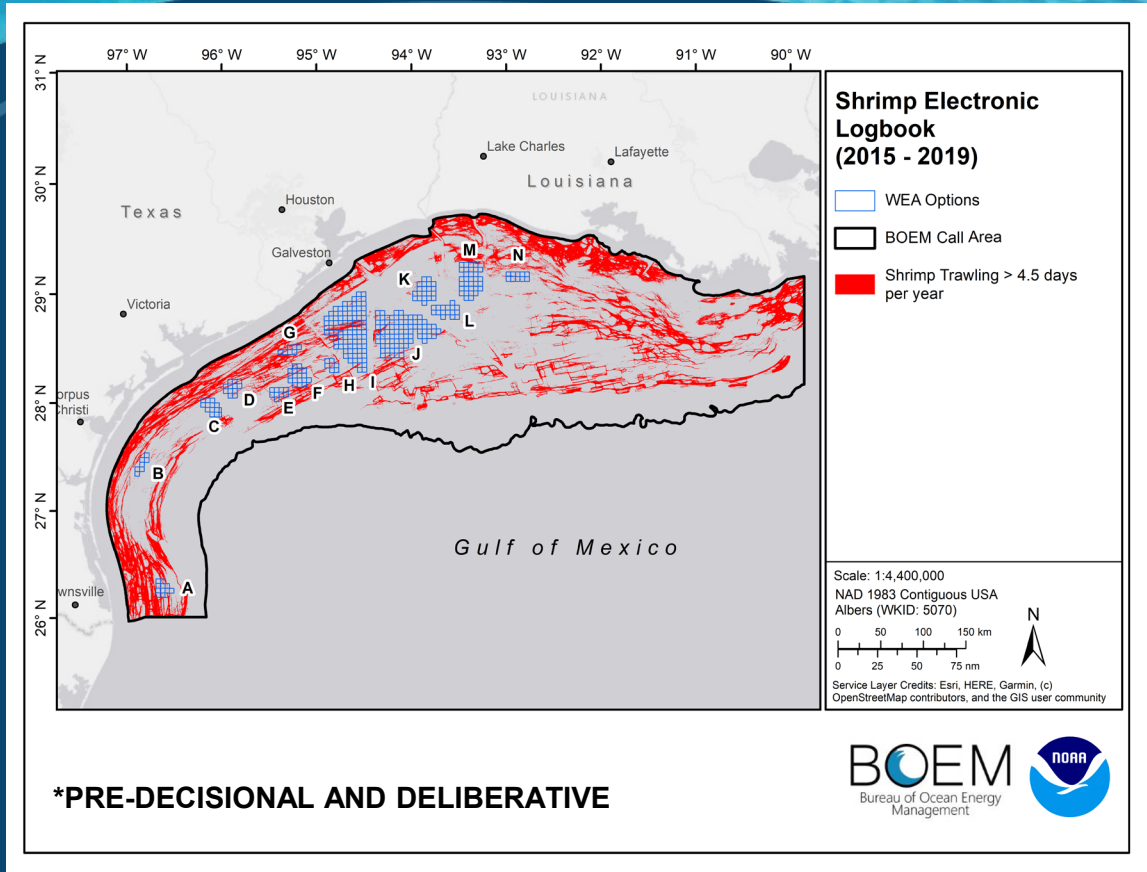
Rationale for WEA Recommendations:

- Competitive Interest
- Less National Security Concerns
- Proximity to Points of Interconnection
- Proximity to Shore
- Less than 10% Moderate-High Shrimping
- Enough acreage to further divide into smaller lease sale areas

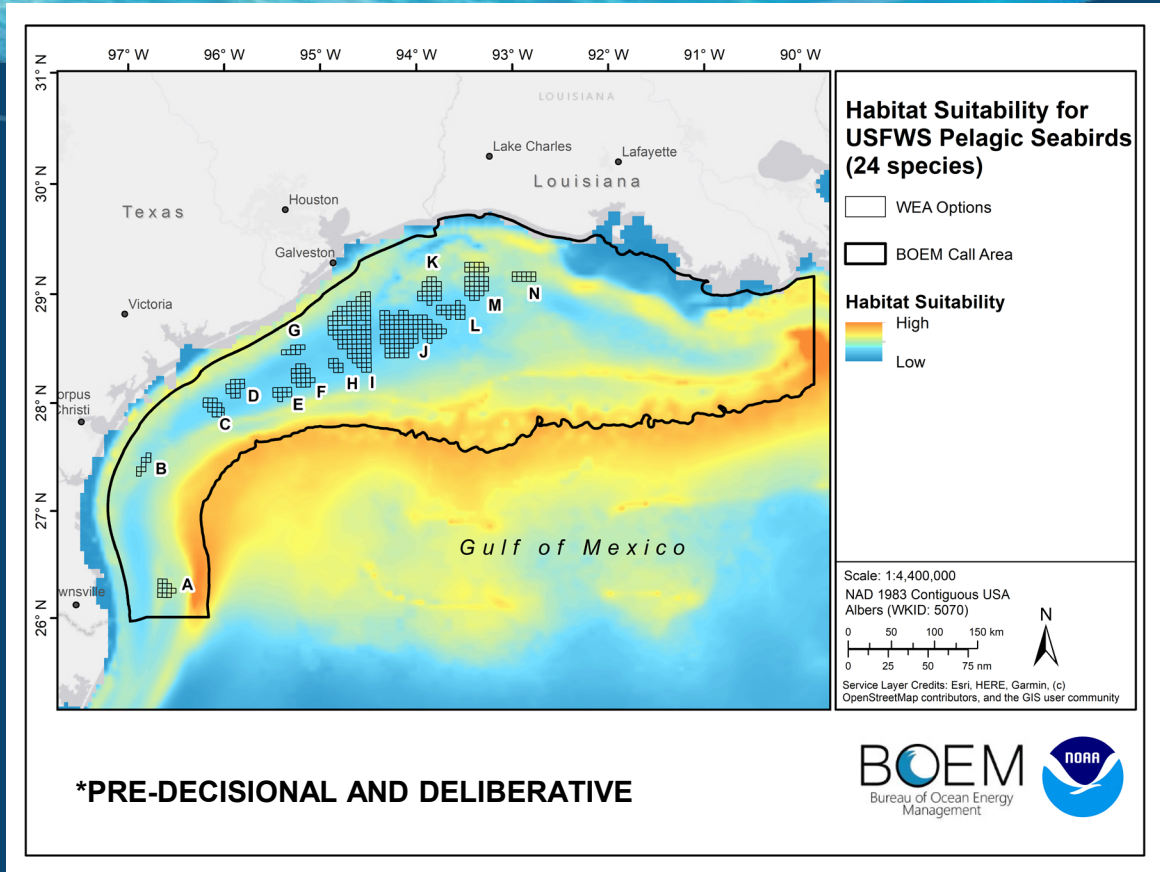
**PRE-DECISIONAL AND DELIBERATIVE



Rationale for Recommended WEAs



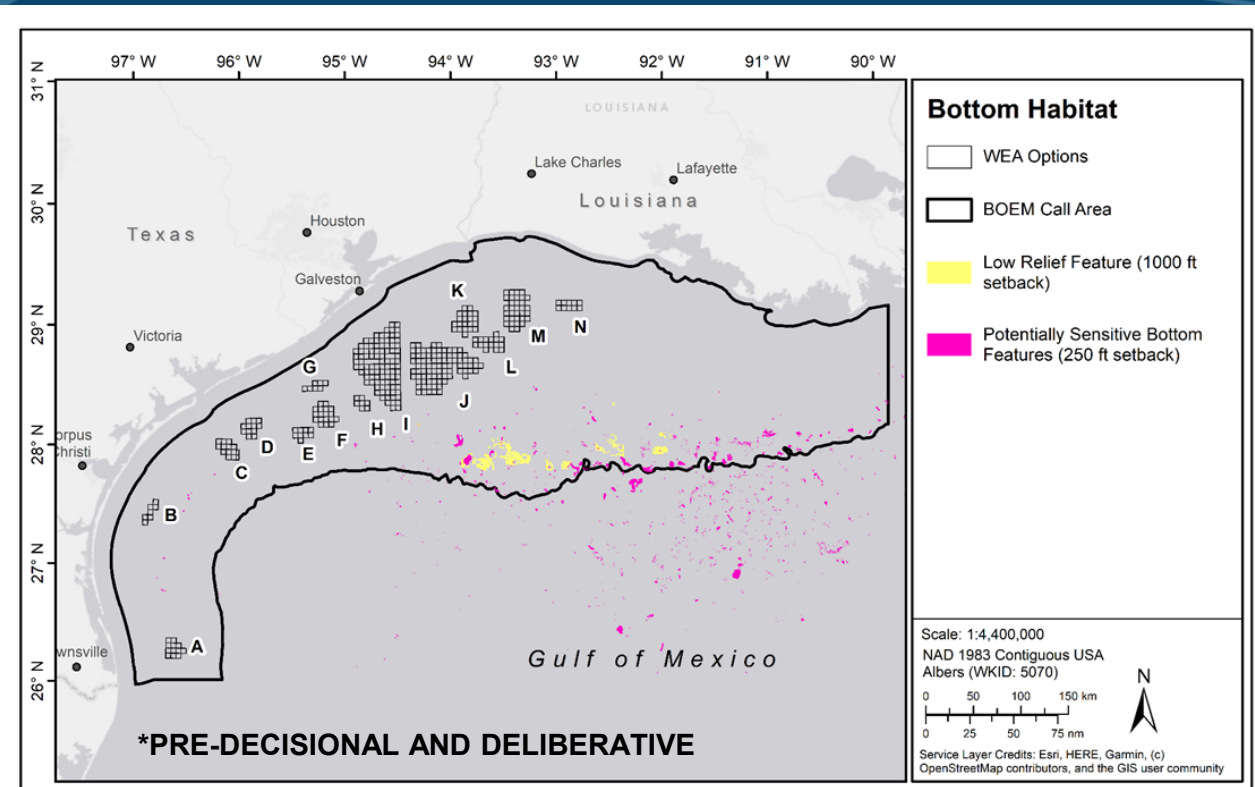
Shrimp Electronic Logbook (2015 - 2019)



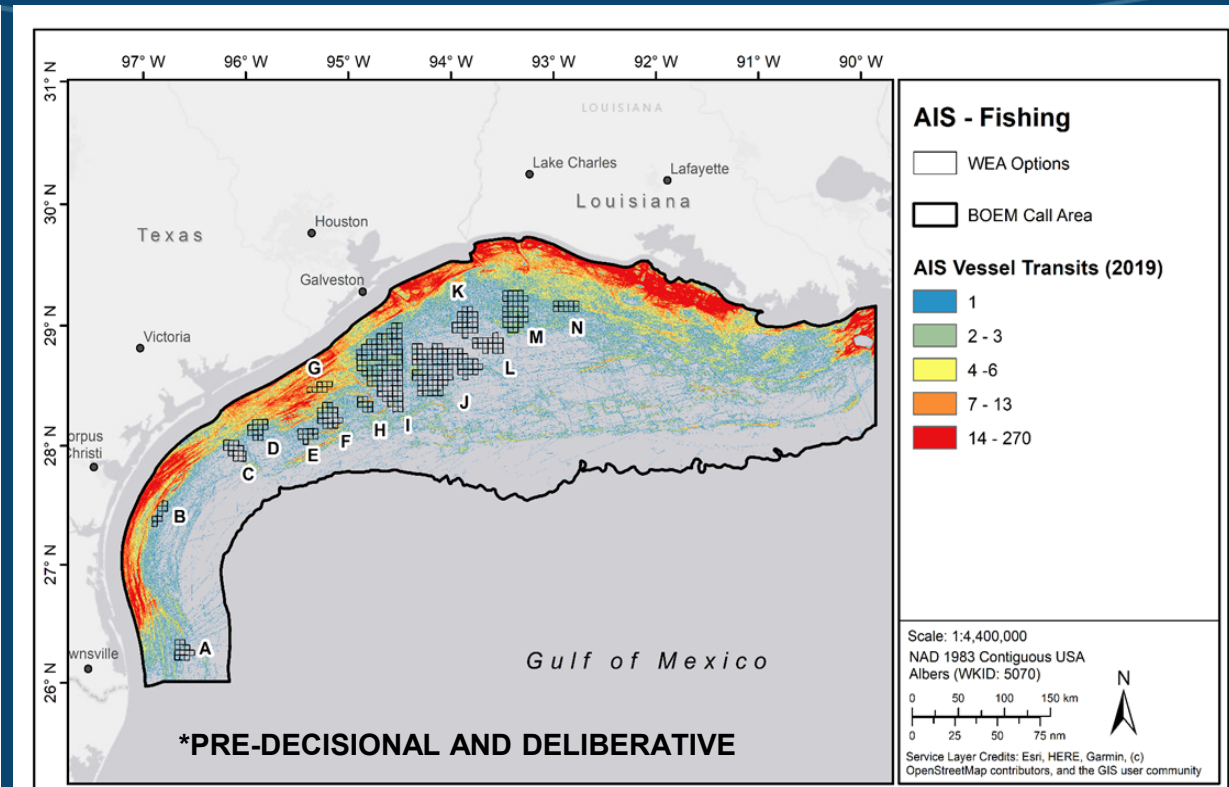
USFWS Pelagic Bird Considerations (24 species)



Rationale for Recommended WEAs

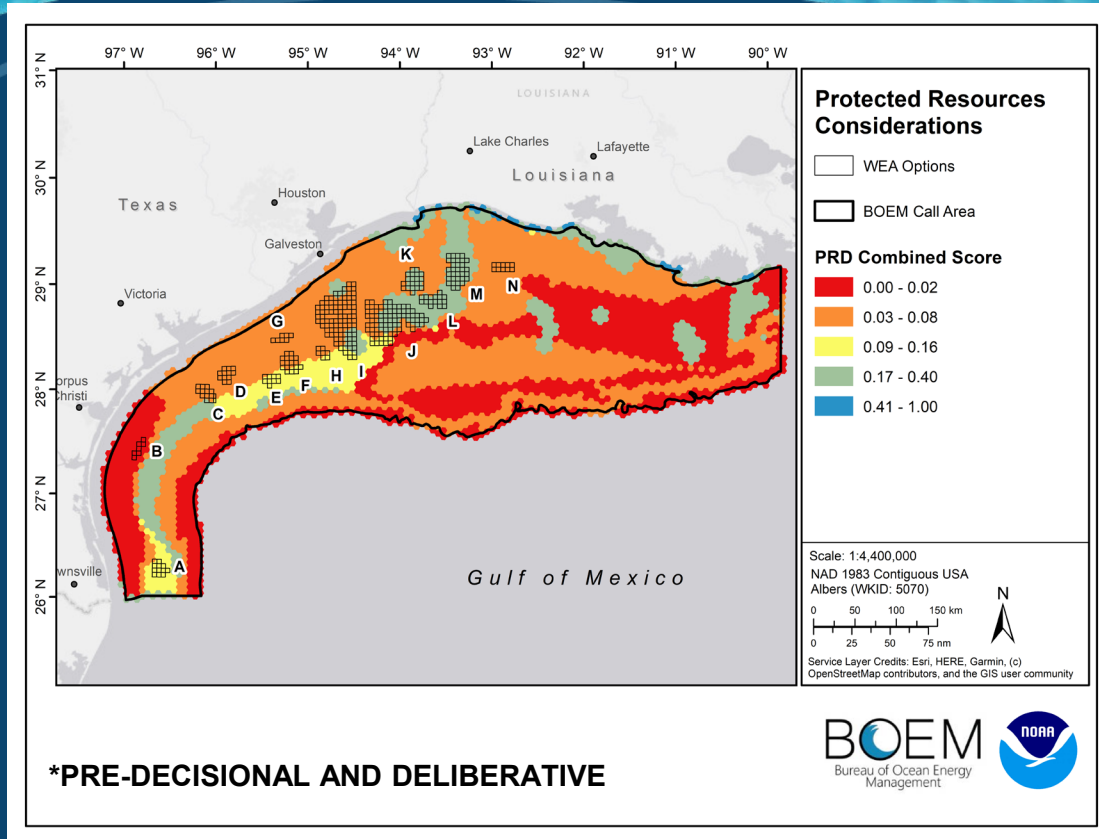


Bottom Habitat-Natural and Cultural Submodel

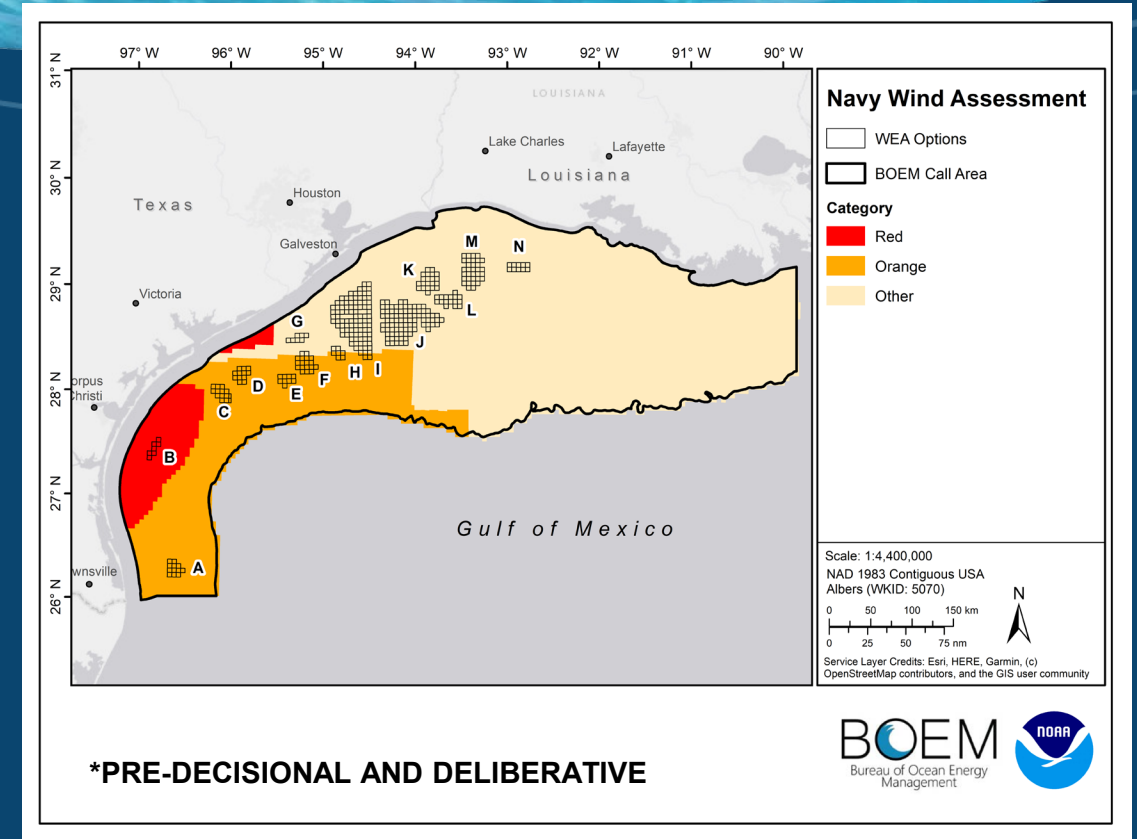


AIS Fishing Data-Industry and Operations Submodel

Rationale for Recommended WEAs



National Marine Fisheries Service Protected Resources combined composite data layer implemented within the relative suitability analysis.



U.S. DoD Preliminary Assessment of the Call Area. The Red Areas denote Wind Exclusion Zones.

Some Major Comments Received on the Preliminary WEAs

- **Impacts to potential size of the WEAs**
- USCG has concerns with lightering zones in the southern portion of Option I
- Department of the Navy recommended only utilizing the northern portion of Option I
- **Environmental Concerns (Birds, Bats)**
- USFWS and NGOs commended BOEM on the 20 nm but there are still concerns for Trans-migratory birds and bats
- Texas Parks Wildlife Department would like to have 1 nm buffer artificial reefs instead of 1000 ft buffer
- NOAA plans to publish a proposed rule for the green sea turtle critical habitat in 2023. Option I and Option M may overlap with this designation
- **General Comments**
- Recommend Lease Area Size 100,000 acres
- Additional WEAs near Port Fourchon, LA
- Concern about the cable routes from the WEAs
- Positive Comments on the CBA used for California PSN

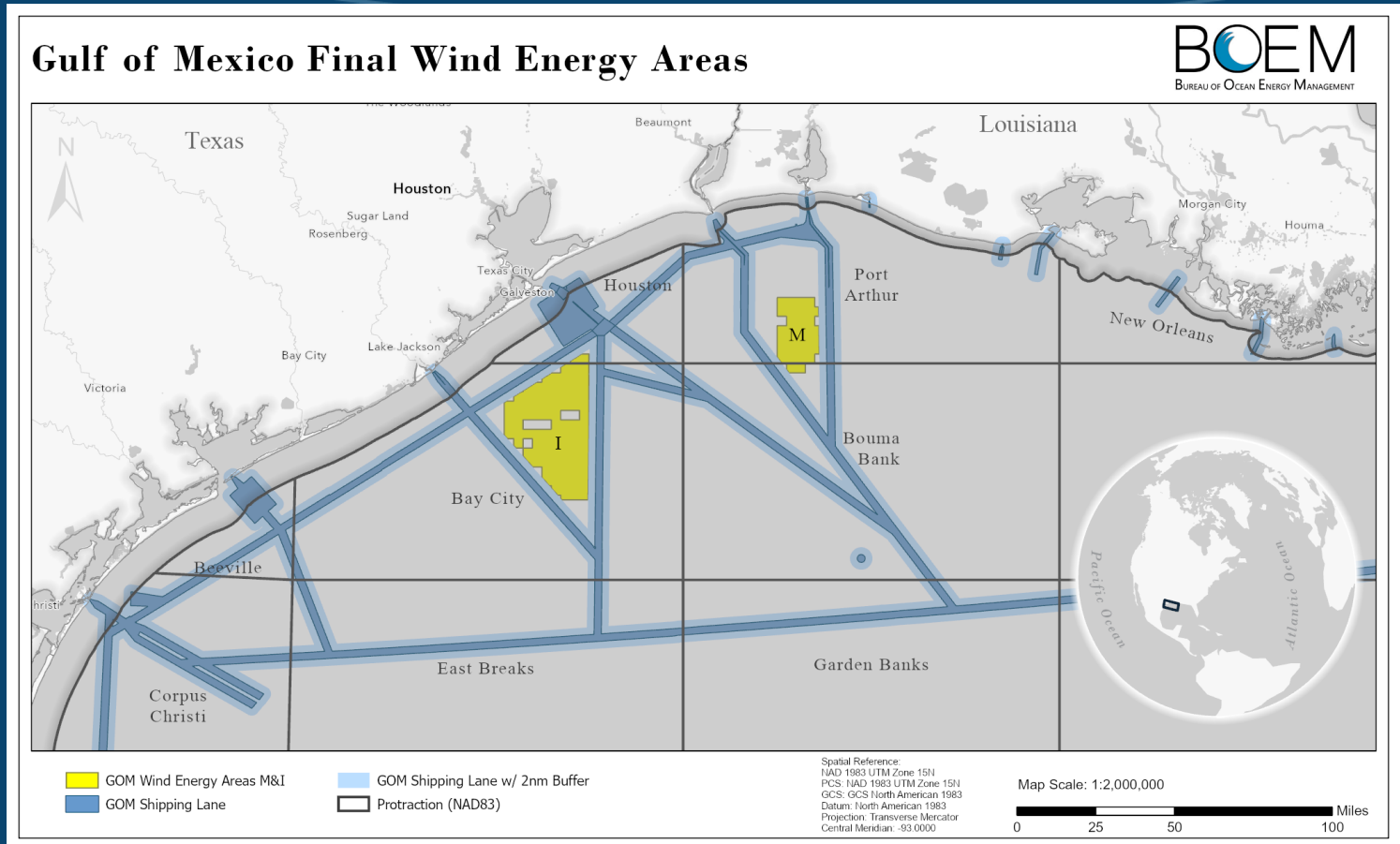


GOM Final WEAs

1. Galveston (Option I) 508,265 acres
2. Lake Charles (Option M) 174,275 acres

Rationale for Final WEAs:

- Removal of 6 blocks in the southern portion of Option I
- Proximity to Points of Interconnection
- Proximity to Shore
- Less than 10% Moderate-High Shrimping
- Enough acreage to further divide into smaller lease sale areas



**PRE-DECISIONAL AND DELIBERATIVE

GOM Offshore Wind Energy Leasing Milestones

- **June 11, 2021:** Request for Interest (RFI) published in the Federal Register.
- **June 15, 2021:** BOEM GOM Inaugural Intergovernmental Renewable Task Force Meeting to present and gather information.
- **July 26, 2021:** Comment Period for the RFI Closed.
 - BOEM received 39 RFI comments.
- **November 1, 2021:** BOEM published the Call for Information and Nominations (Call) in the Federal Register. Docket Number BOEM-2021-0077
- **December 16, 2021:** Comment Period for the Call Closed.
 - BOEM received 40 Call comments.
- **January 19 and 20, 2022:** Fisheries Summit
- **February 2, 2022:** Held 2nd GOM Intergovernmental Renewable Task Force Meeting
- **July 20, 2022:** Draft Wind Energy Areas Published. Comment period closed September 2, 2022
 - BOEM received 107 Draft WEA comments.
- **July 20, 2022:** Draft Environmental Assessment Published. Comment period closed September 2, 2022
- **October 31, 2022:** Final Wind Energy Areas Published.



Future Action: Next Few Months

Next Steps

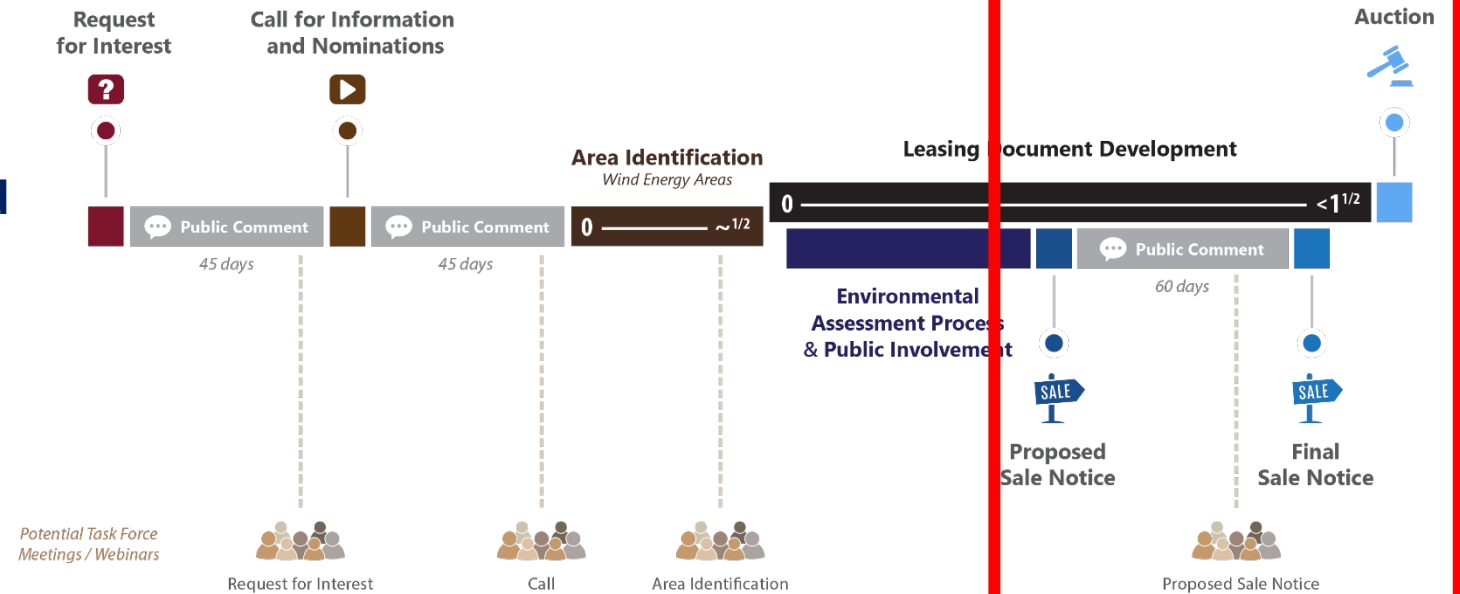
Publish Area Identification (ID) memo

Identify lease areas, auction format, and publish Proposed Sale Notice (PSN)

Final EA

Final Sale Notice (FSN)

Proposed Lease Auction





Bureau of Ocean Energy
Management

BOEM.gov



Tershara Matthews | tershara.matthews@boem.gov | 504-736-2676